

# Terzo tono con tre Fughe

(from: *Ricercate ... Book 1, p. 7 - 1603*)  
for 2 Flugelhorns, Bass Trombone and Tuba

Score (01':50")

Giovanni Maria Trabaci (c.1575 - 1647)

Arr. Michel Rondeau

Moderato ♩ = 90

Musical score for the first system, measures 1-5. The score is for four instruments: Flugelhorn 1, Flugelhorn 2, Bass Trombone, and Tuba. The key signature is one flat (B-flat), and the time signature is common time (C). The tempo is Moderato, with a quarter note equal to 90 beats per minute. Flugelhorn 1 plays a melodic line starting with a half note G4, followed by quarter notes A4, B4, and C5. Flugelhorn 2 has rests in measures 1-3, then plays a half note G4 in measure 4. Bass Trombone and Tuba have rests throughout the first five measures.

Musical score for the second system, measures 6-9. The score continues for Flugelhorn 1, Flugelhorn 2, Bass Trombone, and Tuba. A rehearsal mark '6' is placed above the first measure of this system. Flugelhorn 1 plays a sixteenth-note figure starting on G4. Flugelhorn 2 has a rest in measure 6, then plays a quarter-note figure starting on G4. Bass Trombone plays a half-note figure starting on G4. Tuba has rests throughout measures 6-9.

Terzo tono con tre Fughe - Trabaci - Score

10

Flghn. 1

Flghn. 2

B. Tbn.

Tuba

15

Flghn. 1

Flghn. 2

B. Tbn.

Tuba

20

Flghn. 1

Flghn. 2

B. Tbn.

Tuba

Terzo tono con tre Fughe - Trabaci - Score

25

Flghn. 1

Flghn. 2

B. Tbn.

Tuba

30

Flghn. 1

Flghn. 2

B. Tbn.

Tuba

35

Flghn. 1

Flghn. 2

B. Tbn.

Tuba

# Terzo tono con tre Fughe

(from: *Ricercate ... Book 1, p. 7 - 1603*)  
for 2 Flugelhorns, Bass Trombone and Tuba

## B $\flat$ Flugelhorn 1

Giovanni Maria Trabaci (c.1575 - 1647)

Arr. Michel Rondeau

Moderato  $\text{♩} = 90$

The musical score for the B $\flat$  Flugelhorn 1 part is written in treble clef with a common time signature (C). The tempo is marked 'Moderato' with a quarter note equal to 90 beats per minute. The score consists of seven staves of music, each starting with a measure number: 1, 6, 11, 17, 24, 31, and 37. The first staff (measures 1-5) begins with a quarter rest, followed by a series of eighth and quarter notes. The second staff (measures 6-10) features a more complex rhythmic pattern with sixteenth and eighth notes. The third staff (measures 11-16) includes a sharp sign (#) on the second staff line. The fourth staff (measures 17-23) has several whole rests. The fifth staff (measures 24-30) ends with a double bar line and a fermata. The sixth staff (measures 31-36) contains a flat sign (b) on the second staff line. The seventh staff (measures 37-40) concludes with a final cadence, including a sharp sign (#) on the second staff line.

# Terzo tono con tre Fughe

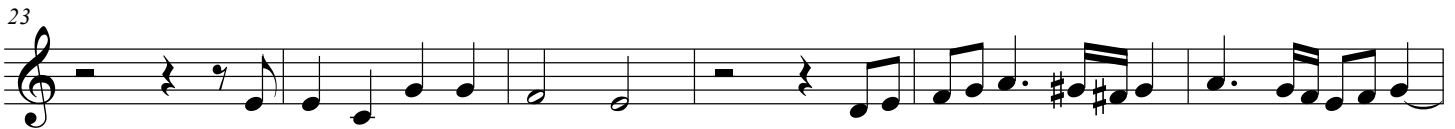
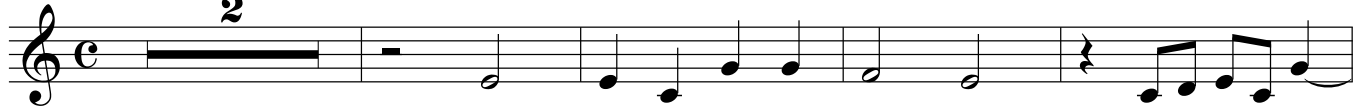
(from: *Ricercate ... Book 1, p. 7 - 1603*)  
for 2 Flugelhorns, Bass Trombone and Tuba

## B $\flat$ Flugelhorn 2

Giovanni Maria Trabaci (c.1575 - 1647)  
Arr. Michel Rondeau

Moderato  $\text{♩} = 90$

2



# Terzo tono con tre Fughe

(from: *Ricercate ... Book 1, p. 7 - 1603*)  
for 2 Flugelhorns, Bass Trombone and Tuba

## Bass Trombone

Giovanni Maria Trabaci (c.1575 - 1647)

Arr. Michel Rondeau

Moderato ♩ = 90



# Terzo tono con tre Fughe

(from: *Ricercate ... Book 1, p. 7 - 1603*)  
for 2 Flugelhorns, Bass Trombone and Tuba

## Tuba

Giovanni Maria Trabaci (c.1575 - 1647)

Arr. Michel Rondeau

Moderato ♩ = 90

10



15



21



26



32



37

