

Consonanze Stravaganti

(from: *Ricercate ... Book 1, p. 116 - 1603*)
for 2 Flugelhorns, Bass Trombone and Tuba

Score (00':40")

Giovanni Maria Trabaci (c.1575 - 1647)

Arr. Michel Rondeau

Moderato ♩ = 92

Musical score for the first system, measures 1-5. The score is for four instruments: Flugelhorn 1, Flugelhorn 2, Bass Trombone, and Tuba. The key signature is one sharp (F#) and the time signature is 4/4. The tempo is Moderato with a quarter note equal to 92 beats per minute. The Flugelhorn 1 part starts with a half note G4, followed by quarter notes A4, B4, and C5. The Flugelhorn 2 part starts with a half note G4, followed by quarter notes A4, B4, and C5, then a sixteenth-note triplet. The Bass Trombone part starts with a half note G3, followed by quarter notes A3, B3, and C4. The Tuba part starts with a half note G2, followed by quarter notes A2, B2, and C3.

Musical score for the second system, measures 6-10. The score is for four instruments: Flugelhorn 1, Flugelhorn 2, Bass Trombone, and Tuba. The key signature is one sharp (F#) and the time signature is 4/4. The tempo is Moderato with a quarter note equal to 92 beats per minute. The Flugelhorn 1 part starts with a sixteenth-note triplet, followed by quarter notes G4, A4, and B4. The Flugelhorn 2 part starts with a half note G4, followed by quarter notes A4, B4, and C5. The Bass Trombone part starts with a half note G3, followed by quarter notes A3, B3, and C4. The Tuba part starts with a half note G2, followed by quarter notes A2, B2, and C3.

Musical score for the third system, measures 11-15. The score is for four instruments: Flugelhorn 1, Flugelhorn 2, Bass Trombone, and Tuba. The key signature is one sharp (F#) and the time signature is common time (C). The tempo is Moderato with a quarter note equal to 92 beats per minute. The Flugelhorn 1 part starts with a quarter note G4, followed by quarter notes A4, B4, and C5. The Flugelhorn 2 part starts with a half note G4, followed by quarter notes A4, B4, and C5. The Bass Trombone part starts with a half note G3, followed by quarter notes A3, B3, and C4. The Tuba part starts with a half note G2, followed by quarter notes A2, B2, and C3.

Consonanze Stravaganti

(from: *Ricercate ... Book 1, p. 116 - 1603*)
for 2 Flugelhorns, Bass Trombone and Tuba

B \flat Flugelhorn 1

Giovanni Maria Trabaci (c.1575 - 1647)
Arr. Michel Rondeau

Moderato $\text{♩} = 92$



Consonanze Stravaganti

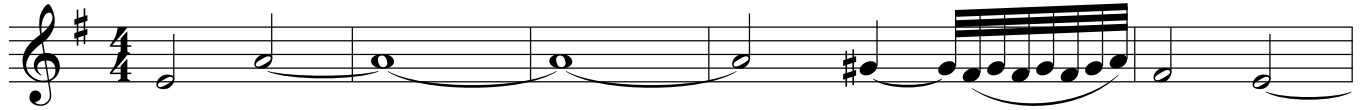
(from: *Ricercate ... Book 1, p. 116 - 1603*)
for 2 Flugelhorns, Bass Trombone and Tuba

B \flat Flugelhorn 2

Giovanni Maria Trabaci (c.1575 - 1647)

Arr. Michel Rondeau

Moderato $\text{♩} = 92$



Consonanze Stravaganti

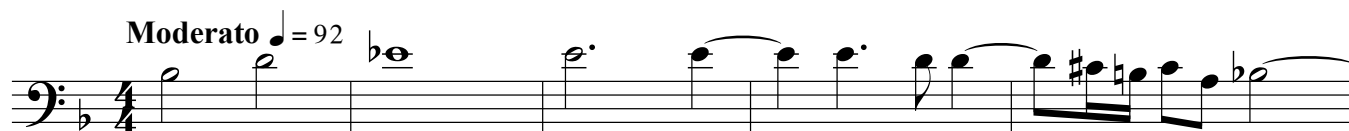
(from: *Ricercate ... Book 1, p. 116 - 1603*)
for 2 Flugelhorns, Bass Trombone and Tuba

Bass Trombone

Giovanni Maria Trabaci (c.1575 - 1647)

Arr. Michel Rondeau

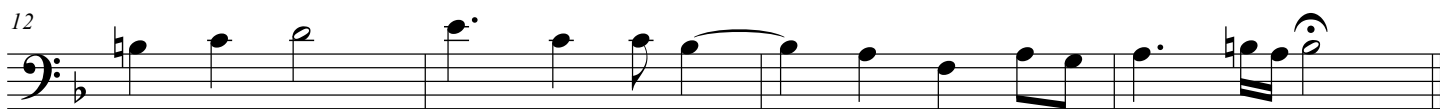
Moderato ♩ = 92



6



12



Consonanze Stravaganti

(from: *Ricercate ... Book 1, p. 116 - 1603*)
for 2 Flugelhorns, Bass Trombone and Tuba

Tuba

Giovanni Maria Trabaci (c.1575 - 1647)
Arr. Michel Rondeau

Moderato ♩ = 92



8



12

