

# Prelude in D Minor

(from: *Organ Prelude, P.402*)  
for 2 Flugelhorns and Bass Trombone

Score (00':50")

Johann Pachelbel (1653 - 1706)

Arr. Michel Rondeau

Moderato ♩ = 90

Flugelhorn 1

Flugelhorn 2

Bass Trombone

4

Flghn. 1

Flghn. 2

B. Tbn.

7

Flghn. 1

Flghn. 2

B. Tbn.

Prelude in D Minor - P.402 - Pachelbel - Score

10

Flghn. 1

Flghn. 2

B. Tbn.

12

Flghn. 1

Flghn. 2

B. Tbn.

15

Flghn. 1

Flghn. 2

B. Tbn.

# Prelude in D Minor

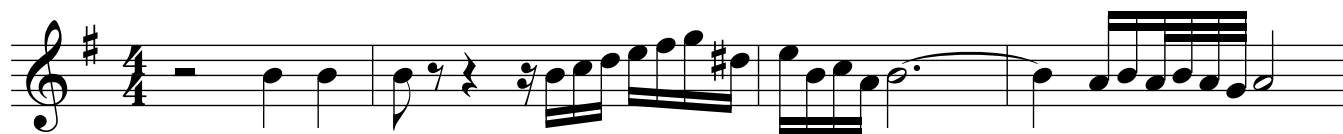
(from: *Organ Prelude, P.402*)  
for 2 Flugelhorn and Bass Trombone

## B $\flat$ Flugelhorn 1

Johann Pachelbel (1653 - 1706)

Arr. Michel Rondeau

Moderato  $\text{♩} = 90$



# Prelude in D Minor

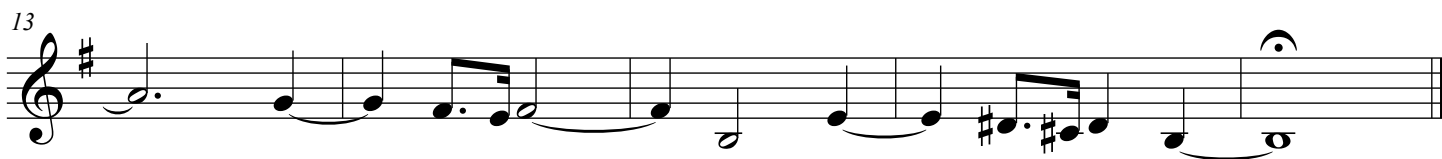
(from: *Organ Prelude, P.402*)  
for 2 Flugelhorns and Bass Trombone

## B $\flat$ Flugelhorn 2

Johann Pachelbel (1653 - 1706)

Arr. Michel Rondeau

Moderato  $\text{♩} = 90$



# Prelude in D Minor

(from: *Organ Prelude, P.402*)  
for 2 Flugelhorns and Bass Trombone

## Bass Trombone

Johann Pachelbel (1653 - 1706)

Arr. Michel Rondeau

Moderato ♩ = 90

The musical score for Bass Trombone is written in bass clef, 4/4 time, and D minor. It consists of four staves of music. The first staff begins with a half note D2, followed by quarter notes E2, F2, and G2. The second staff starts at measure 5 with a quarter note G2, followed by eighth notes A2, B2, and C3, then a quarter rest, and continues with quarter notes D3, E3, and F3. The third staff starts at measure 10 with a quarter note G3, followed by eighth notes A3, B3, and C4, then a quarter note D4, and continues with eighth notes E4, F4, and G4. The fourth staff starts at measure 14 with a quarter note A4, followed by eighth notes B4, C5, and D5, then a quarter note E5, and concludes with a half note F5.