

Score

Double Fugue

From EG 184

Edvard Grieg

Trans. David Kemp

Andante non troppo ♩ = 66

Musical score for Soprano, Alto, Tenor, and Great Bass, measures 1-4. The score is in G minor (two flats) and common time. The Soprano part is mostly rests. The Alto part begins with a half note G4, followed by a half note A4 with a sharp sign, and then a half note B4 with a natural sign. The Tenor part begins with a quarter rest, followed by quarter notes G4, A4, B4, and C5, then a half note B4, and finally quarter notes A4, G4, and F4. The Great Bass part is mostly rests.

Musical score for Soprano, Alto, Tenor, and Great Bass, measures 5-8. Measure 5 is marked with a '5'. The Soprano part has a half note G4, followed by a half note A4 with a sharp sign, and then a half note B4 with a natural sign. The Alto part has quarter notes G4, A4, B4, and C5, then a half note B4, and finally quarter notes A4, G4, and F4. The Tenor part has a half note G4, followed by a half note A4 with a sharp sign, and then a half note B4 with a natural sign. The Great Bass part is mostly rests.

Musical score for Soprano, Alto, Tenor, and Great Bass, measures 9-12. Measure 9 is marked with a '9'. The Soprano part has quarter notes G4, A4, B4, and C5, then a half note B4, and finally quarter notes A4, G4, and F4. The Alto part has quarter notes G4, A4, B4, and C5, then a half note B4, and finally quarter notes A4, G4, and F4. The Tenor part has quarter notes G4, A4, B4, and C5, then a half note B4, and finally quarter notes A4, G4, and F4. The Great Bass part is mostly rests.

13

S.
A.
T.
GB.

18

S.
A.
T.
GB.

23

S.
A.
T.
GB.

27

S.
A.
T.
GB.

This system contains measures 27 through 30. The Soprano (S.) part begins with a half note G4, followed by quarter notes A4, B4, and C5. The Alto (A.) part has a quarter rest in measure 27, followed by quarter notes G4, A4, and B4. The Tenor (T.) part starts with a half note G3, followed by quarter notes A3, B3, and C4. The Bass (GB.) part begins with a half note G2, followed by quarter notes A2, B2, and C3. The key signature has two flats (Bb, Eb).

31

S.
A.
T.
GB.

This system contains measures 31 through 34. The Soprano (S.) part has a quarter rest in measure 31, followed by quarter notes G4, A4, and B4. The Alto (A.) part has a quarter rest in measure 31, followed by a half note G4 in measure 32, and a half note A4 in measure 33. The Tenor (T.) part starts with a quarter note G3, followed by quarter notes A3, B3, and C4. The Bass (GB.) part begins with a half note G2, followed by quarter notes A2, B2, and C3. The key signature has two flats (Bb, Eb).

35

S.
A.
T.
GB.

This system contains measures 35 through 38. The Soprano (S.) part has a quarter rest in measure 35, followed by quarter notes G4, A4, and B4. The Alto (A.) part starts with a quarter note G4, followed by quarter notes A4, B4, and C5. The Tenor (T.) part begins with a quarter note G3, followed by quarter notes A3, B3, and C4. The Bass (GB.) part starts with a quarter note G2, followed by quarter notes A2, B2, and C3. The key signature has two flats (Bb, Eb).

Double Fugue

39

S.
A.
T.
GB.

43

S.
A.
T.
GB.

48

S.
A.
T.
GB.

Double Fugue

52

S.
A.
T.
GB.

This system contains measures 52 through 56. The Soprano (S.) part features a melodic line with a long note in measure 54. The Alto (A.) part has a similar melodic line. The Tenor (T.) part is mostly silent with rests. The Bass (GB.) part provides a harmonic foundation with a steady eighth-note pattern.

57

S.
A.
T.
GB.

This system contains measures 57 through 61. The Soprano (S.) part continues its melodic line. The Alto (A.) part has a more active role with eighth-note patterns. The Tenor (T.) part has a long note in measure 59. The Bass (GB.) part continues with its eighth-note accompaniment.

62

S.
A.
T.
GB.

This system contains measures 62 through 66. The Soprano (S.) part has a long note in measure 62. The Alto (A.) part has a melodic line with eighth notes. The Tenor (T.) part has a melodic line with eighth notes. The Bass (GB.) part has a melodic line with eighth notes and a long note in measure 66.

66

S.
A.
T.
GB.

This system contains measures 66 through 69. The Soprano part begins with a melodic line in measure 66, while the Alto, Tenor, and Bass parts provide harmonic support. The Alto part features a long melodic line across measures 66 and 67. The Tenor part has a more active line with eighth notes in measures 68 and 69. The Bass part is characterized by a long, sustained note in measure 66, followed by a melodic line in measures 68 and 69.

70

S.
A.
T.
GB.

This system contains measures 70 through 73. The Soprano part has a long note in measure 70, followed by a melodic line in measures 71 and 72. The Alto part features a long melodic line across measures 70 and 71. The Tenor part has a melodic line in measure 71 and rests in measures 70 and 72. The Bass part has a melodic line in measure 71 and rests in measures 70 and 72.

74

S.
A.
T.
GB.

This system contains measures 74 through 77. The Soprano part has a melodic line in measure 74, followed by a long note in measure 75, and a melodic line in measures 76 and 77. The Alto part features a long melodic line across measures 74 and 75. The Tenor part has a melodic line in measure 75 and rests in measures 74 and 76. The Bass part has a melodic line in measure 75 and rests in measures 74 and 76.

Double Fugue

78

S.
A.
T.
GB.

This system contains measures 78 through 81. It features four staves: Soprano (S.), Alto (A.), Tenor (T.), and Bass (GB.). The key signature has two flats (B-flat and E-flat). The Soprano part begins with a half note G4, followed by a quarter note A4, and then a series of eighth notes. The Alto part starts with a quarter note G4, followed by a series of eighth notes. The Tenor part begins with a half note G3, followed by a quarter note A3, and then a series of eighth notes. The Bass part starts with a half note G2, followed by a quarter note A2, and then a series of eighth notes. The music concludes with a fermata over the final notes of each part.

82

S.
A.
T.
GB.

This system contains measures 82 through 85. It features four staves: Soprano (S.), Alto (A.), Tenor (T.), and Bass (GB.). The key signature has two flats. The Soprano part begins with a half note G4, followed by a quarter note A4, and then a series of eighth notes. The Alto part starts with a quarter note G4, followed by a series of eighth notes. The Tenor part begins with a half note G3, followed by a quarter note A3, and then a series of eighth notes. The Bass part starts with a half note G2, followed by a quarter note A2, and then a series of eighth notes. The music concludes with a fermata over the final notes of each part.

86

rit. *tr*

S.
A.
T.
GB.

This system contains measures 86 through 89. It features four staves: Soprano (S.), Alto (A.), Tenor (T.), and Bass (GB.). The key signature has two flats. The Soprano part begins with a half note G4, followed by a quarter note A4, and then a series of eighth notes. The Alto part starts with a quarter note G4, followed by a series of eighth notes. The Tenor part begins with a half note G3, followed by a quarter note A3, and then a series of eighth notes. The Bass part starts with a half note G2, followed by a quarter note A2, and then a series of eighth notes. The music concludes with a fermata over the final notes of each part. A trill (tr) is marked above the final note of the Soprano part, and a triplet (3) is marked below the final notes of the Bass part.

Soprano

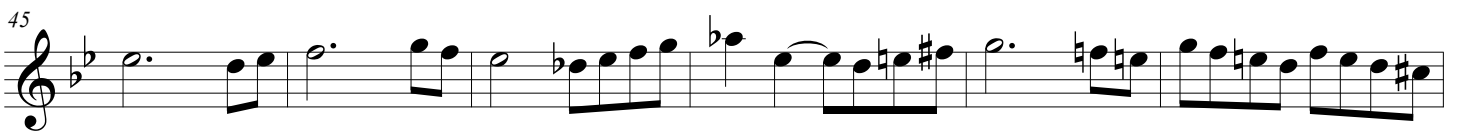
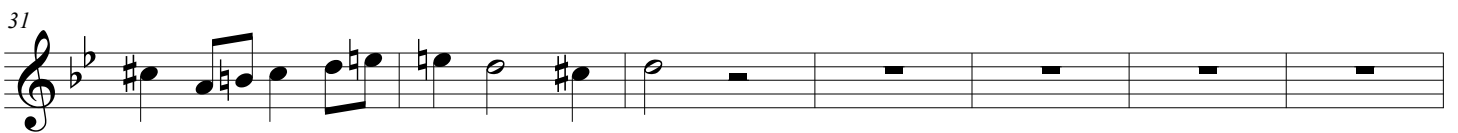
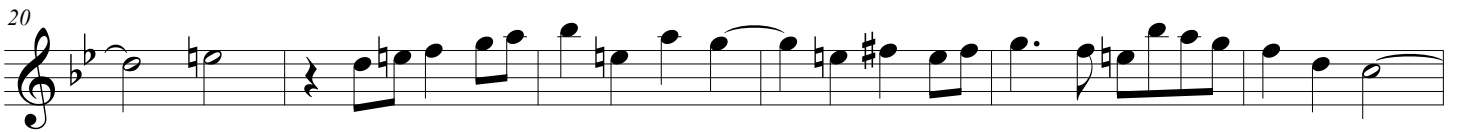
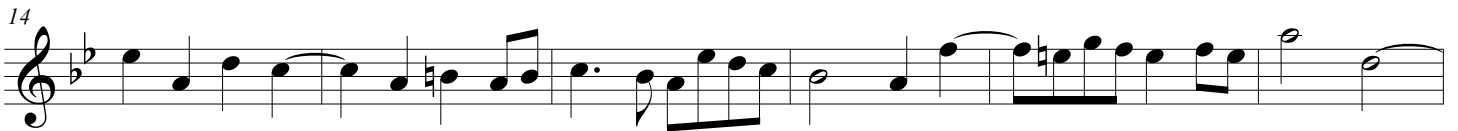
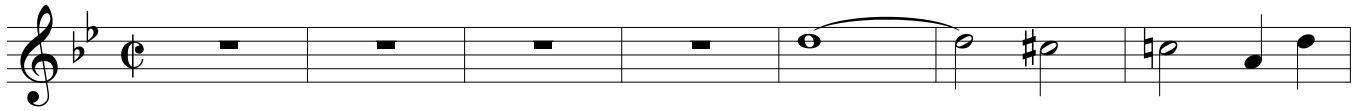
Double Fugue

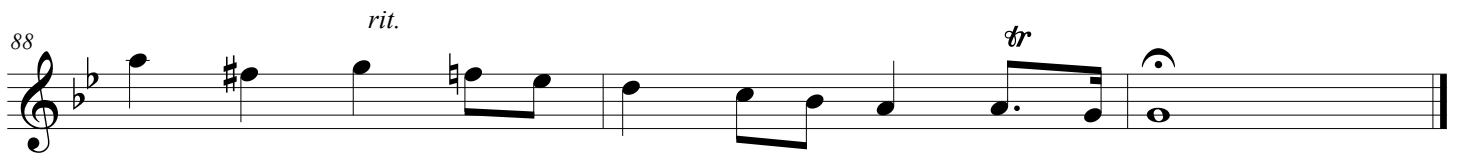
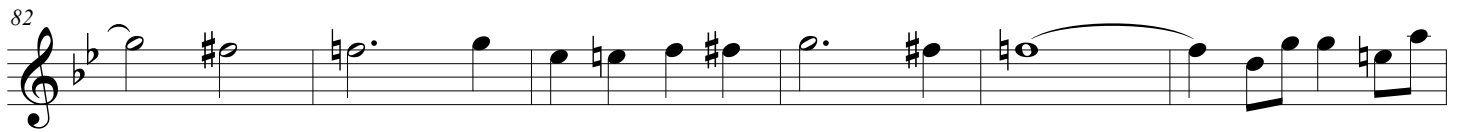
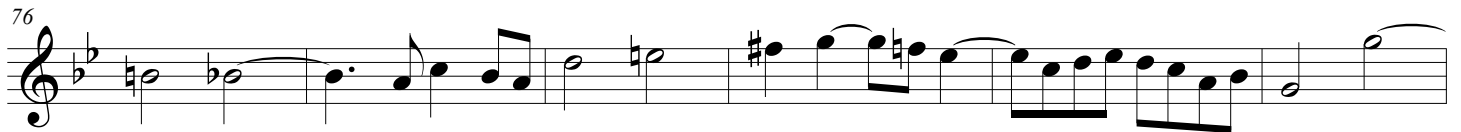
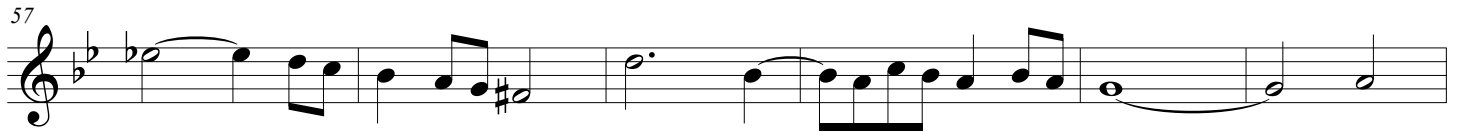
From EG 184

Edvard Grieg

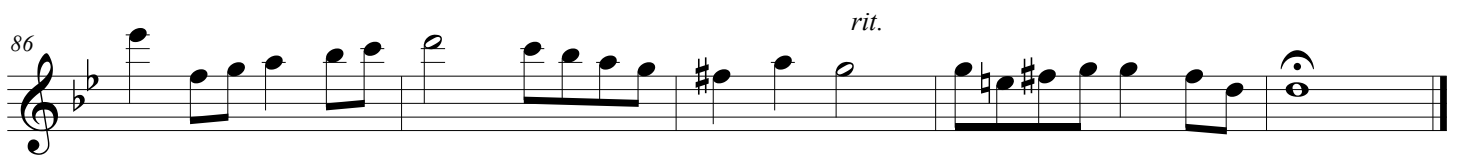
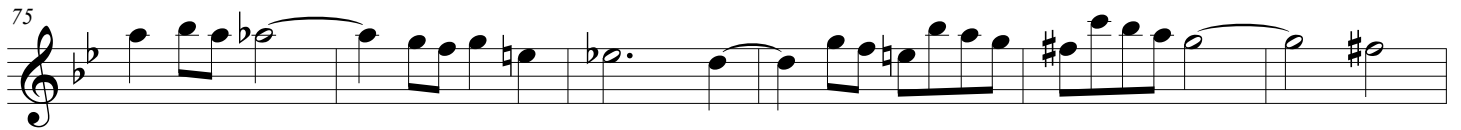
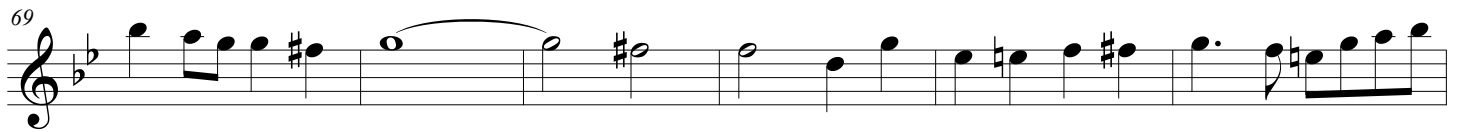
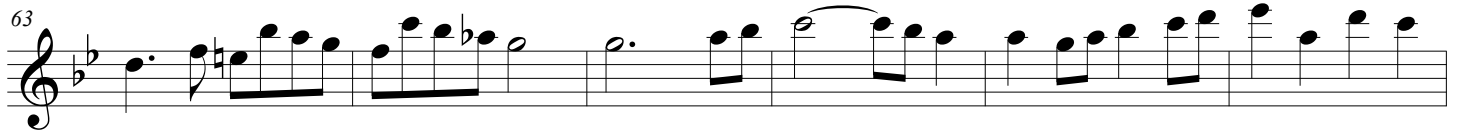
Trans. David Kemp

Andante non troppo $\text{♩} = 66$





Double Fugue



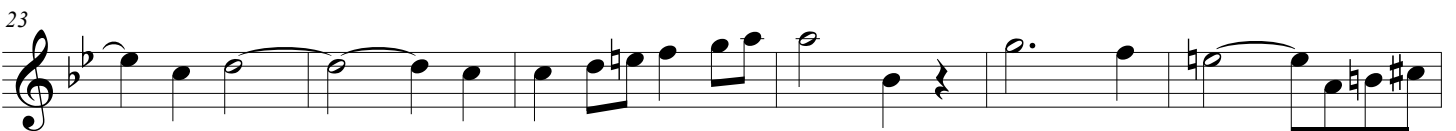
Tenor

Double Fugue

From EG 184

Edvard Grieg

Trans. David Kemp



61

