

# Mozart Piano Sonata K281 in Bb Major (N° 3): Movt I

TRANSCRIBED FOR CELLO AND SIMPLE ACCOMPANIMENT: TRANPOSED DOWN A MINOR 3RD INTO G MAJ

NOTATED IN DOUBLETIME FOR EASIER READING: CLEAN VERSION

by cellofun.eu

Allegro moderato

Vc

6

8

11

13

15

17

21

23

26

29

Musical score for Cello and Simple Accompaniment, measures 31-69. The score is written in G major and 3/4 time. It features a variety of musical techniques including trills, triplets, and dynamic markings. The key signature has one sharp (F#) and the time signature is 3/4. The score is divided into systems, with measure numbers 31, 34, 37, 41, 45, 48, 53, 56, 59, 63, 65, and 69 marking the beginning of each system. Trills are indicated by 'tr' above notes. Triplet markings are shown as '3' above or below groups of notes. The piece concludes with a double bar line and repeat dots at the end of measure 69.

72



75



78



81



83



85



89



92



95



97



100



103



106



# Mozart Piano Sonata K281 in Bb Major (N° 3): Movt II

FOR CELLO AND SIMPLE ACCOMPANIMENT: TRANSPOSED DOWN A MINOR 3RD FROM Eb INTO C MAJOR

Andante amoroso

CLEAN VERSION

by cellofun.eu





# Mozart Piano Sonata K281 in Bb Major (N° 3): Movt III

TRANSCRIBED FOR CELLO AND SIMPLE ACCOMPANIMENT: TRANSPosed DOWN A MINOR 3RD INTO G MAJ

Rondo: Allegro

CLEAN VERSION

by cellofun.eu

Vc

8

11

15

20

24

27

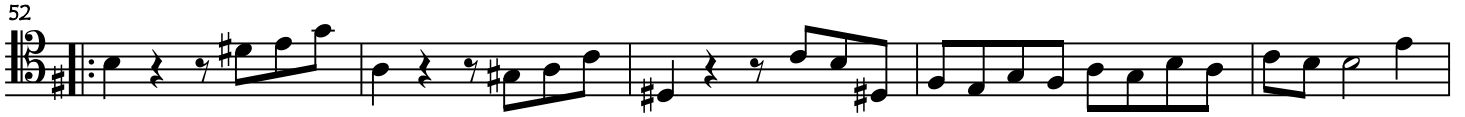
31

34

37

42

2 Mozart Piano Sonata K281 in Bb: Movt III: FOR CELLO AND SIMPLE ACCOMP: DOWN A MINOR 3RD  
CLEAN VERSION



Mozart Piano Sonata K281 in Bb: Movt III: FOR CELLO AND SIMPLE ACCOMP: DOWN A MINOR 3RD  
CLEAN VERSION

105



108



112



119



125



129



132



136



142



147



151



154



158

