

French Suite No. 1, BWV 812

2. Courante

Arr. for recorders by Christian Mondrup

Johann Sebastian Bach (1685-1750)

Descant recorder

4

8

11

15

18

21

3. Sarabande

Descant
recorder



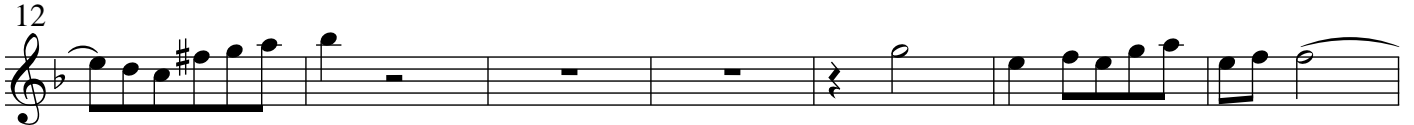
Musical staff for recorder descant, measures 1-5. The staff is in treble clef, 3/4 time, and B-flat major. It begins with a quarter rest, followed by a series of eighth and sixteenth notes, and ends with a quarter rest.

6



Musical staff for recorder descant, measures 6-11. It continues the melodic line from the previous staff, ending with a double bar line and repeat sign.

12



Musical staff for recorder descant, measures 12-18. It features a series of eighth notes, followed by a whole rest, and then continues with eighth notes.

19



Musical staff for recorder descant, measures 19-24. It continues the melodic line, ending with a double bar line and repeat sign.

French Suite No. 1, BWV 812

2. Courante

Arr. for recorders by Christian Mondrup

Johann Sebastian Bach (1685-1750)

Treble
recorder



3. Sarabande

Treble recorder



7



13



19



French Suite No. 1, BWV 812

2. Courante

Arr. for recorders by Christian Mondrup

Johann Sebastian Bach (1685-1750)

Tenor recorder



4



8



11



14



17



21



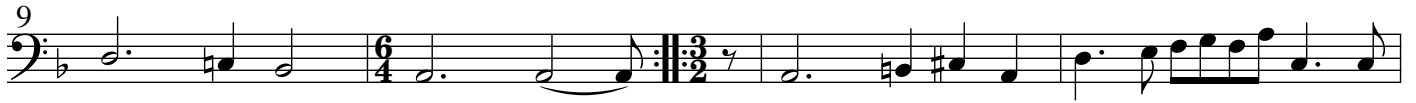
French Suite No. 1, BWV 812

2. Courante

Arr. for recorders by Christian Mondrup

Johann Sebastian Bach (1685-1750)

Bass
recorder



3. Sarabande

Bass recorder

Musical notation for Bass recorder, measures 1-6. The staff is in bass clef, 3/4 time, and B-flat major. It begins with a flat sign above the first measure. The melody consists of quarter and eighth notes.

7

Musical notation for Bass recorder, measures 7-12. Measure 7 is marked with a '7'. The notation includes a repeat sign and a fermata over the final note of the section.

13

Musical notation for Bass recorder, measures 13-18. Measure 13 is marked with a '13'. The notation includes a fermata over the first note and a slur over the final two notes.

19

Musical notation for Bass recorder, measures 19-24. Measure 19 is marked with a '19'. The notation ends with a double bar line and repeat dots.